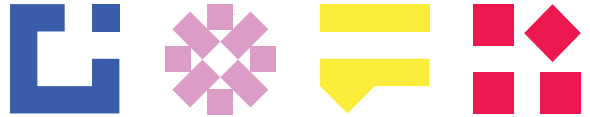


Building Specification

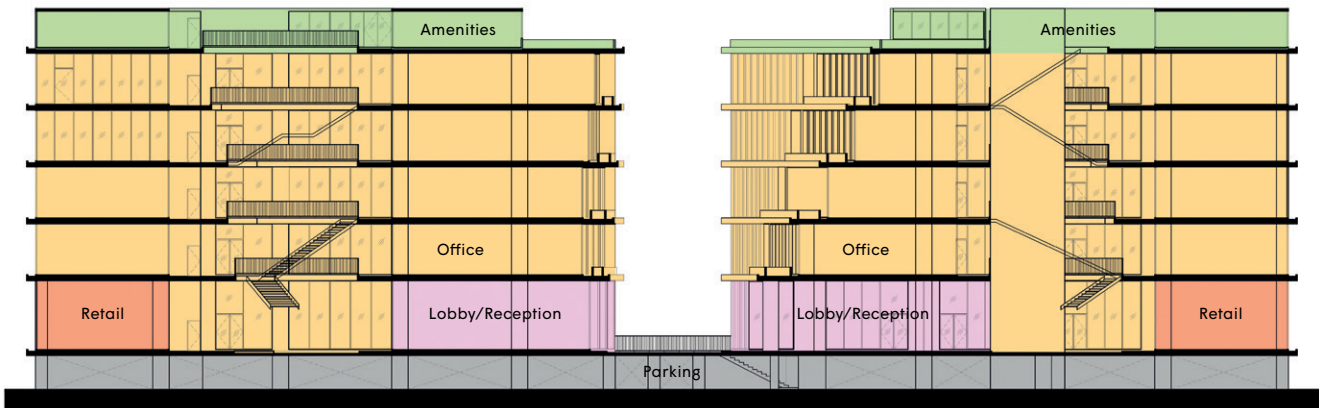


Address	111 Praditmanutham Road, Ladprao, Bangkok 10230
No. of Storeys	6 storeys & 1 basement
Retail floor	1st Floor
Office floors	2nd – 6th Floor
Gross Building Area	20,000 gross square meters
Total Leasable Office Area	10,700 leasable square meters
Leasable Office Floor Plate Size	900-1,500 sqm <i>¹ Some rental units will include outdoor terrace space</i>
Floor-to-Floor Height	Lobby Floor: 5.3 meters Floors 2 – 5: 3.5 meters
Celling Height	3 meters
Air-Conditioning System	Variable Refrigerant Flow (VRF) / Split Type
Floor Finishing	Concrete Trowel Finished Floor
No. of Car Parking	400 Spaces
Passenger Lifts	4 Lifts / Capacity X,XXX kg. per lift
Car Parking Lift	1 Lift / Capacity X,XXX kg. per lift
Building Security System	24/7 Security System
Expected Completion	Q3 of 2021



Cross Section Sample Floor Plan

Cross Section



Sample Floor Plan

